



EASILY ACCESS
**OUTDOOR
RELAXATION**



WEATHER-RESISTANT DURABILITY

Count on the handcrafted Bruno Elite curved outdoor stairlift to precisely match every angle of your outdoor stairway. Designed to endure harsh weather, the Elite delivers year-round performance and Bruno's renowned smooth ride. Enjoy the outdoors with a curved stairlift.

Lifting Capacity

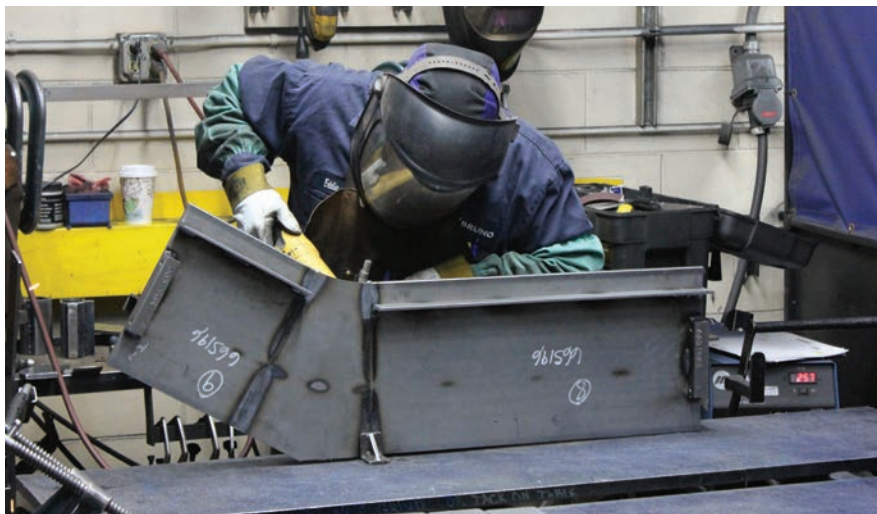
181 kg (400 lb)

Temperature Tested

-18°C - 52°C (0°F - 125°F)

Warranty

5-Year Limited





HIGH-PERFORMANCE RELIABILITY

Custom: Handcrafted vertical rail maximises open space by precisely following every angle and serving as the foundation for an ultra-smooth ride.

Easy to Use: Sit down, clip belt and press armrest control to glide up/down stairs. Wireless control also comes standard.

Weather Resistant: Marine-grade vinyl, durable outdoor paint and lightweight waterproof cover provide year-round protection.

Safe: Seat swivels up to 90° at top landing for safe exit away from stairs. Retractable seat belt and safety sensors further peace of mind.

Comfortable: Generously sized seat is adjustable in height. Footrest height and space between armrests are also adjustable.

Dependable: Battery-powered operation ensures performance, even in the event of a power outage.

Learn More
bruno.com/aus



OPTIONS



Larger Seat



Larger Footrest

ABOUT BRUNO

Veteran-Founded | Family-Owned

Bruno makes stairlifts and vertical platform lifts to help people better access homes, public buildings and businesses, and scooter lifts to assist people in easily transporting their mobility devices.

