



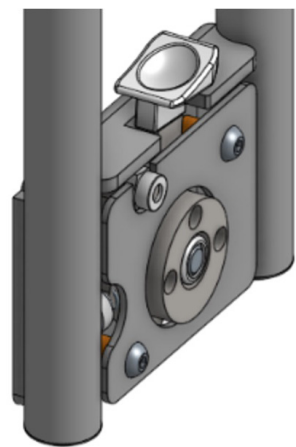
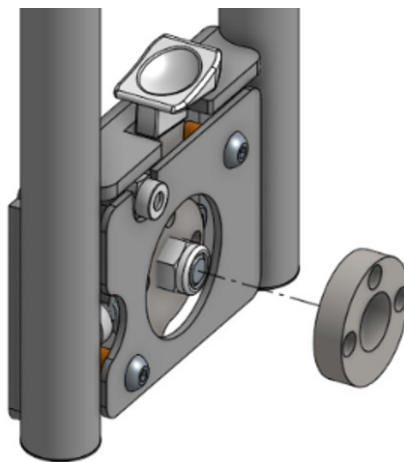
FL250/FLX GRAB/ASSIST BAR INSTALLATION INSTRUCTIONS

FOLDING SINGLE - BEB046520

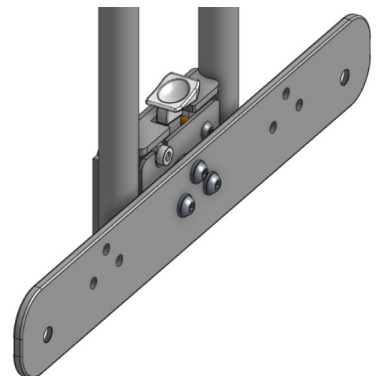
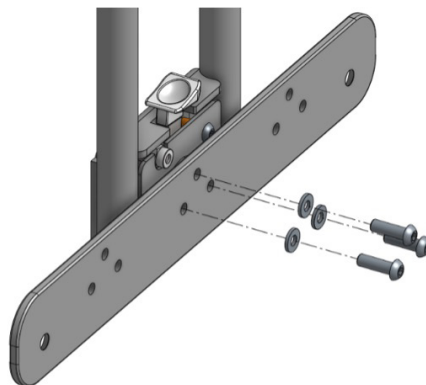


Required tools: (1) x 4 mm Allen key, (1) x small spanner

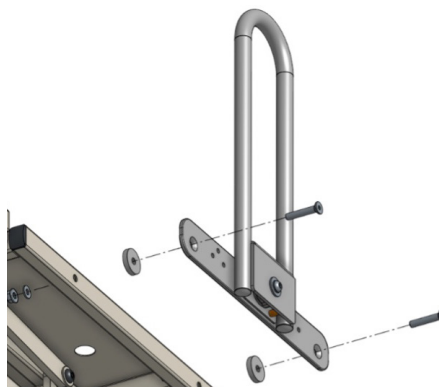
1. Position the circular spacer to align with holes on rail body. It's recommended to do this with the rail flat on the ground

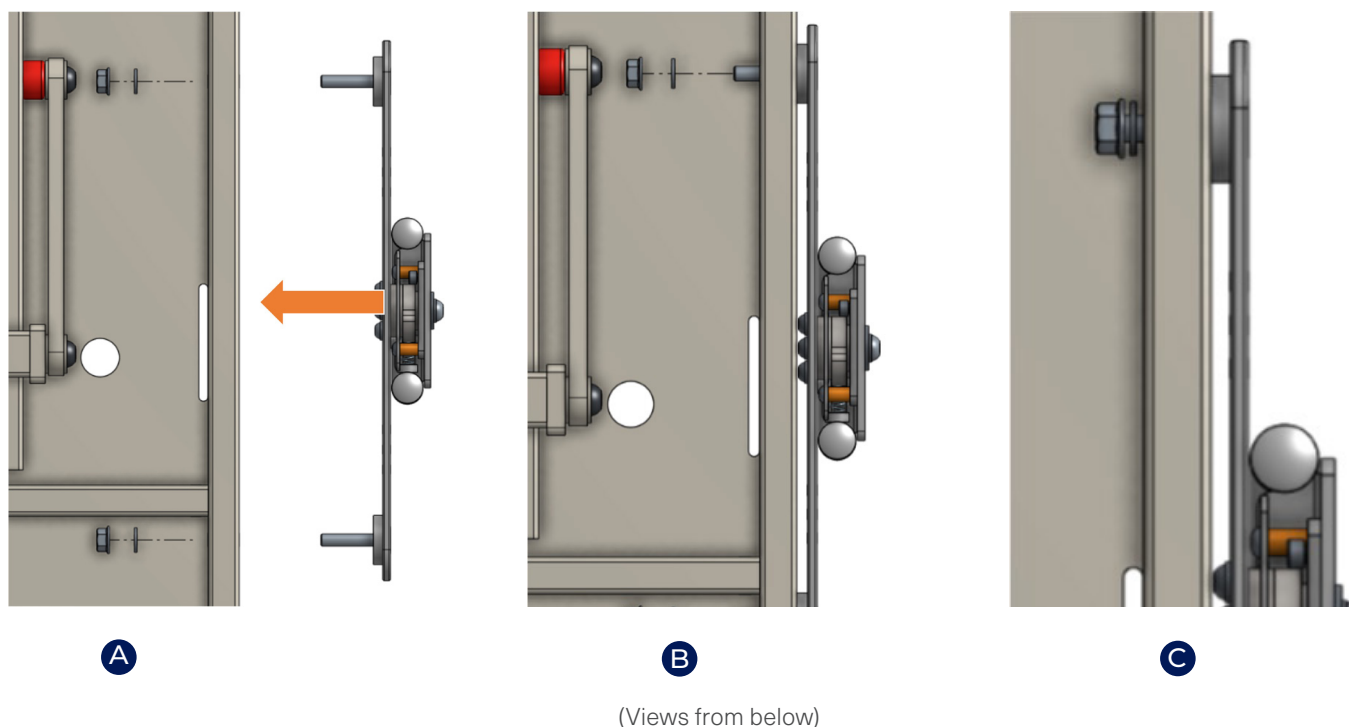


2. Use an Allen key to install the three washers and screws through the circular spacer. Do not overtighten screws



3. Now the rail is ready to be installed onto bed. Insert long countersunk screws through mounting plate and bed spacers





4. **A**, **B** Insert rail into bed mounting holes. Ensure that the bed spacers **2** are present and in position as shown

5. **C** Fasten nuts over washers. The rail should be securely fixed once installed

Note: For beds with King Single expansion kit installed, 1 x GSP391625 **3** must be added (not included with BEA46520)

The spacers are intended to cover the length of the screws **1** which allows the nuts **5** and washers **4** to be fastened over the extra length of the expansion pieces.

